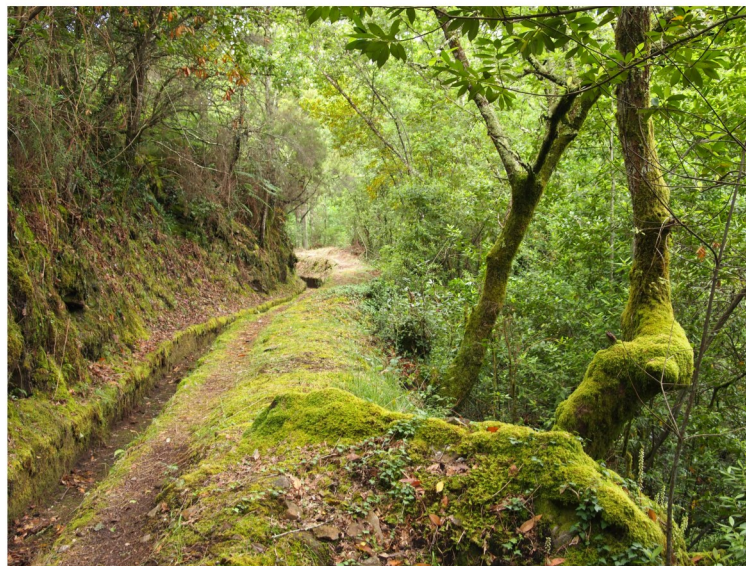


## ↳ Piscaredo Watercourse

The construction of the Piscaredo watercourse happened in the XIII century, in the reign of D.Afonso II. Due the lack of water, indispensable to the irrigation of the the fields, the owners of the lands of Mondim decided one day, to go through their houses until the Mestras, confluence of the rivers Cabrão with the Cabresto and only came back many months later bringing with them the precious liquid. It is told that the other villages disputed this water, starting the watercourse from down to up. When they figured it, the people from Mondim were already bringing water with them, conquering not only the right of having the water, but also the great level to build the watercourse. The primitive watercourse was made in land, with all the inconvenient coming from that. In the years of 1960/61 it was completely rebuilt in granite plates, as we know it now, through the Public Contest promoted by the State , which paid for the job, having the Property Association made a loan for the effect, amortized during 20 years. Through the watercourse there are 15 ou 20 spring waters. Today, most of those spring waters don't run to the course due to the unevenness resulted from the job done there. The lottery of the "andadas", in the number of 17 (same as the properties who made the watercourse) its made at 24 of June, S.John's day, resulting in the scheduling of the water utilization, auctioning half-day which reverts in favour of the work done repairing the watercourse. The Piscaredo watercourse had a "scout", which watched and divided the water for the people and an own regulation, constant from the municipal law after the XVIII century. That regulation forbidden the cut of the waters before the mills of Piscaredo and the obligatoriness of letting the water run through the stream that crosses Mondim, a flow of water equivalent to a full tile. The oldest references to this watercourse called it "Levada de Pisqueiredo". Actually it developed to "Levada de Piscaredo", even tho both are correct.



### Useful contacts

Town Hall - 255 389 300  
 Tourism Office - 255 389 370  
 Civil Protection - 962 145 987  
 Alvão Natural Park - 255 381 209  
 Local Police - 255 381 122  
 Fire Department - 255 981 251  
 Hospital - 255 381 180  
 Pharmacy Oliveira - 255 381 104  
 Pharmacy Seara Lemos - 255 389 160



### Táxis

Anibal Sanches Gonçalves - 255381259 / 966323078  
 Emiliano Vilas Boas Saldanha - 255389000 / 965398201  
 Anibal Freitas - 255381189 / 919191722

### Táxis

Atei - 255386197  
 Bilhó - 255381135 / 965056962  
 Campanhó - 259979140 / 968336958  
 Ermelo - 919790529  
 Ermelo - 255381487 914737568  
 Paradaça - 255381561 / 962638278  
 Vilar de Ferreiros - 255381521 / 969419007



PR  
2

## PEDESTRIAN ROUTE Levada de Piscaredo

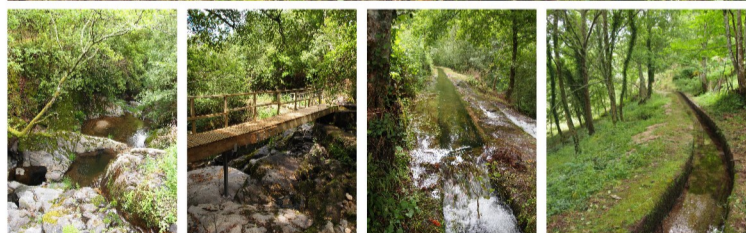
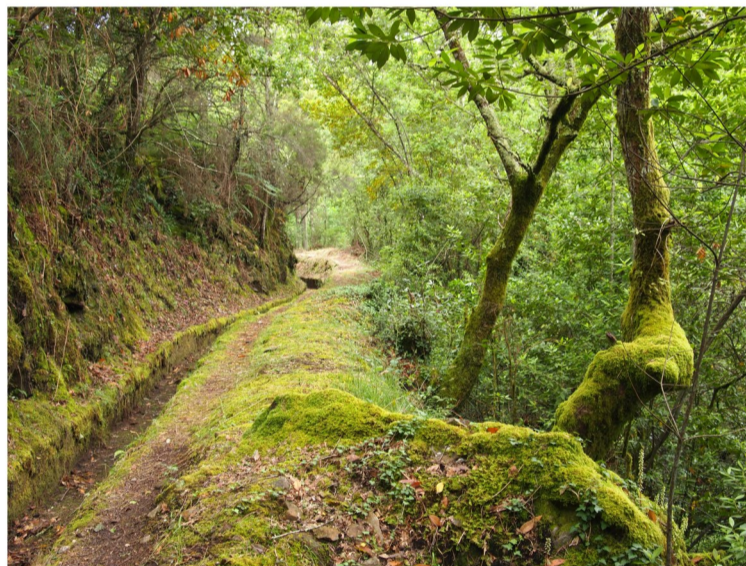
Piscaredo Watercourse



município de Mondim de Basto

## ↳ Piscaredo Watercourse

The construction of the Piscaredo watercourse happened in the XIII century, in the reign of D.Afonso II. Due the lack of water, indispensable to the irrigation of the the fields, the owners of the lands of Mondim decided one day, to go through their houses until the Mestras, confluence of the rivers Cabrão with the Cabresto and only came back many months later bringing with them the precious liquid. It is told that the other villages disputed this water, starting the watercourse from down to up. When they figured it, the people from Mondim were already bringing water with them, conquering not only the right of having the water, but also the great level to build the watercourse. The primitive watercourse was made in land, with all the inconvenient coming from that. In the years of 1960/61 it was completely rebuilt in granite plates, as we know it now, through the Public Contest promoted by the State , which paid for the job, having the Property Association made a loan for the effect, amortized during 20 years. Through the watercourse there are 15 ou 20 spring waters. Today, most of those spring waters don't run to the course due to the unevenness resulted from the job done there. The lottery of the "andadas", in the number of 17 (same as the properties who made the watercourse) its made at 24 of June, S.John's day, resulting in the scheduling of the water utilization, auctioning half-day which reverts in favour of the work done repairing the watercourse. The Piscaredo watercourse had a "scout", which watched and divided the water for the people and an own regulation, constant from the municipal law after the XVIII century. That regulation forbidden the cut of the waters before the mills of Piscaredo and the obligatoriness of letting the water run through the stream that crosses Mondim, a flow of water equivalent to a full tile. The oldest references to this watercourse called it "Levada de Pisqueiredo". Actually it developed to "Levada de Piscaredo", even tho both are correct.



### Useful contacts

Town Hall - 255 389 300  
 Tourism Office - 255 389 370  
 Civil Protection - 962 145 987  
 Alvão Natural Park - 255 381 209  
 Local Police - 255 381 122  
 Fire Department - 255 981 251  
 Hospital - 255 381 180  
 Pharmacy Oliveira - 255 381 104  
 Pharmacy Seara Lemos - 255 389 160



### Táxis

Anibal Sanches Gonçalves - 255381259 / 966323078  
 Emiliano Vilas Boas Saldanha - 255389000 / 965398201  
 Anibal Freitas - 255381189 / 919191722

### Táxis

Atei - 255386197  
 Bilhó - 255381135 / 965056962  
 Campanhó - 259979140 / 968336958  
 Ermelo - 919790529  
 Ermelo - 255381487 914737568  
 Paradaça - 255381561 / 962638278  
 Vilar de Ferreiros - 255381521 / 969419007



PR  
2

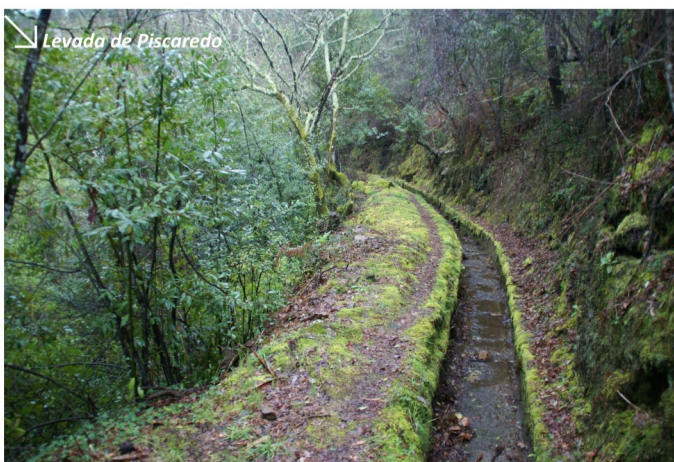
## PEDESTRIAN ROUTE Levada de Piscaredo

Piscaredo Watercourse



município de Mondim de Basto

↳ Levada de Piscaredo





## ➤ Pedestrian Route – Levada de Piscaredo (Piscaredo Watercourse)

The PR2- “Levada de Piscaredo” begins near the confluence of the Cabrão river with the Cabril river, at a place called “Mestras”, in Vilar de Ferreiros.

The best way to reach the place its by taxi, until “Pedreira” place, and then, on foot by the way which gives access to the referred Mestras place. This is a large and well defined, smoothly going down until the start of the route.

At the Mestras, there is a dam where the Piscaredo watercourse begins, an old mill and two or three more houses. To easily reach the dam you cross the Cabril river at the filly – way to cross left by the romans – being these built by twenty blocks having one of them engraved the date of 1980.

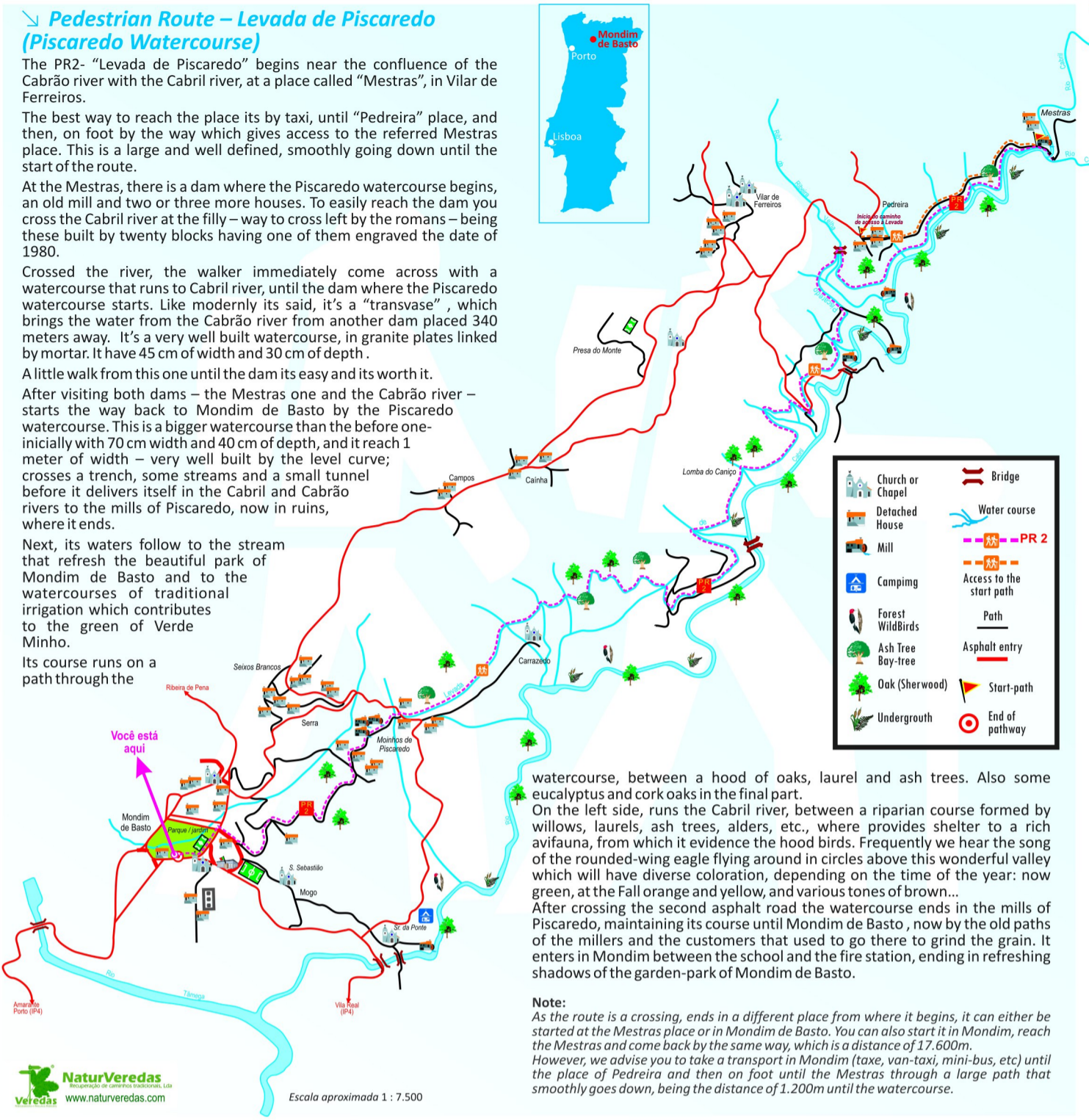
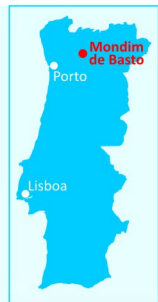
Crossed the river, the walker immediately come across with a watercourse that runs to Cabril river, until the dam where the Piscaredo watercourse starts. Like modernly its said, it's a “transvase”, which brings the water from the Cabrão river from another dam placed 340 meters away. It's a very well built watercourse, in granite plates linked by mortar. It have 45 cm of width and 30 cm of depth.

A little walk from this one until the dam its easy and its worth it.

After visiting both dams – the Mestras one and the Cabrão river – starts the way back to Mondim de Basto by the Piscaredo watercourse. This is a bigger watercourse than the before one- initially with 70 cm width and 40 cm of depth, and it reach 1 meter of width – very well built by the level curve; crosses a trench, some streams and a small tunnel before it delivers itself in the Cabril and Cabrão rivers to the mills of Piscaredo, now in ruins, where it ends.

Next, its waters follow to the stream that refresh the beautiful park of Mondim de Basto and to the watercourses of traditional irrigation which contributes to the green of Verde Minho.

Its course runs on a path through the




watercourse, between a hood of oaks, laurel and ash trees. Also some eucalyptus and cork oaks in the final part.

On the left side, runs the Cabril river, between a riparian course formed by willows, laurels, ash trees, alders, etc., where provides shelter to a rich avifauna, from which it evidence the hood birds. Frequently we hear the song of the rounded-wing eagle flying around in circles above this wonderful valley which will have diverse coloration, depending on the time of the year: now green, at the Fall orange and yellow, and various tones of brown...

After crossing the second asphalt road the watercourse ends in the mills of Piscaredo, maintaining its course until Mondim de Basto, now by the old paths of the millers and the customers that used to go there to grind the grain. It enters in Mondim between the school and the fire station, ending in refreshing shadows of the garden-park of Mondim de Basto.

### Note:

As the route is a crossing, ends in a different place from where it begins, it can either be started at the Mestras place or in Mondim de Basto. You can also start it in Mondim, reach the Mestras and come back by the same way, which is a distance of 17.600m. However, we advise you to take a transport in Mondim (taxe, van-taxi, mini-bus, etc) until the place of Pedreira and then on foot until the Mestras through a large path that smoothly goes down, being the distance of 1.200m until the watercourse.



Escala aproximada 1 : 7.500

## ➤ Technique Board

Start: Mestras Place (Vilar de Ferreiros)

Finish: Mondim de Basto

Field: Environment, landscape, cultural and sport

Type of route: small route, traditional paths through the watercourses

Distance to walk: around 8,8 km

Duration of the walk: 2h and 30m

Difficulty Level: low

Unevenness: not significative

Time Advised: Entire year

Accumulated Unevenness: 110m

Distance between the most significant places:

Mestras → Stream of the Ribeira Velha - 1.740m

Stream of the Ribeira Velha → Piscaredo - 5.580 m

Piscaredo → Mondim de Basto - 1.500 m

Altitude:

- Mestras - 300 m

- Piscaredo Mills - 250 m

- Garden-Park of Mondim - 190 m

The PR2 “Levada de Piscaredo” is a pedestrian path of small route marked on both ways, according with the regulation of Portuguese Federation of Camping and Mountaineering. The marks with yellow and red ink are the following:



## ➤ Special Care and Code of Conduct-Follow only signed paths

- Avoid noises and attitudes that disturb the local tranquility
- Watch the fauna at distance with binoculars if possible
- Do not damage the flora
- Do not abandon garbage, take it to a place where it have gathering service
- Respect private property
- Don't make fire
- Don't collect samples of plants or rocks
- Be nice to local people, telling that you are doing the PR.

THROUGH THE WATERCOURSE THERE ARE SMALL CLIFFS SO BE CAREFUL.



## ➤ Pedestrian Route – Levada de Piscaredo (Piscaredo Watercourse)

The PR2- “Levada de Piscaredo” begins near the confluence of the Cabrão river with the Cabril river, at a place called “Mestras”, in Vilar de Ferreiros.

The best way to reach the place its by taxi, until “Pedreira” place, and then, on foot by the way which gives access to the referred Mestras place. This is a large and well defined, smoothly going down until the start of the route.

At the Mestras, there is a dam where the Piscaredo watercourse begins, an old mill and two or three more houses. To easily reach the dam you cross the Cabril river at the filly – way to cross left by the romans – being these built by twenty blocks having one of them engraved the date of 1980.

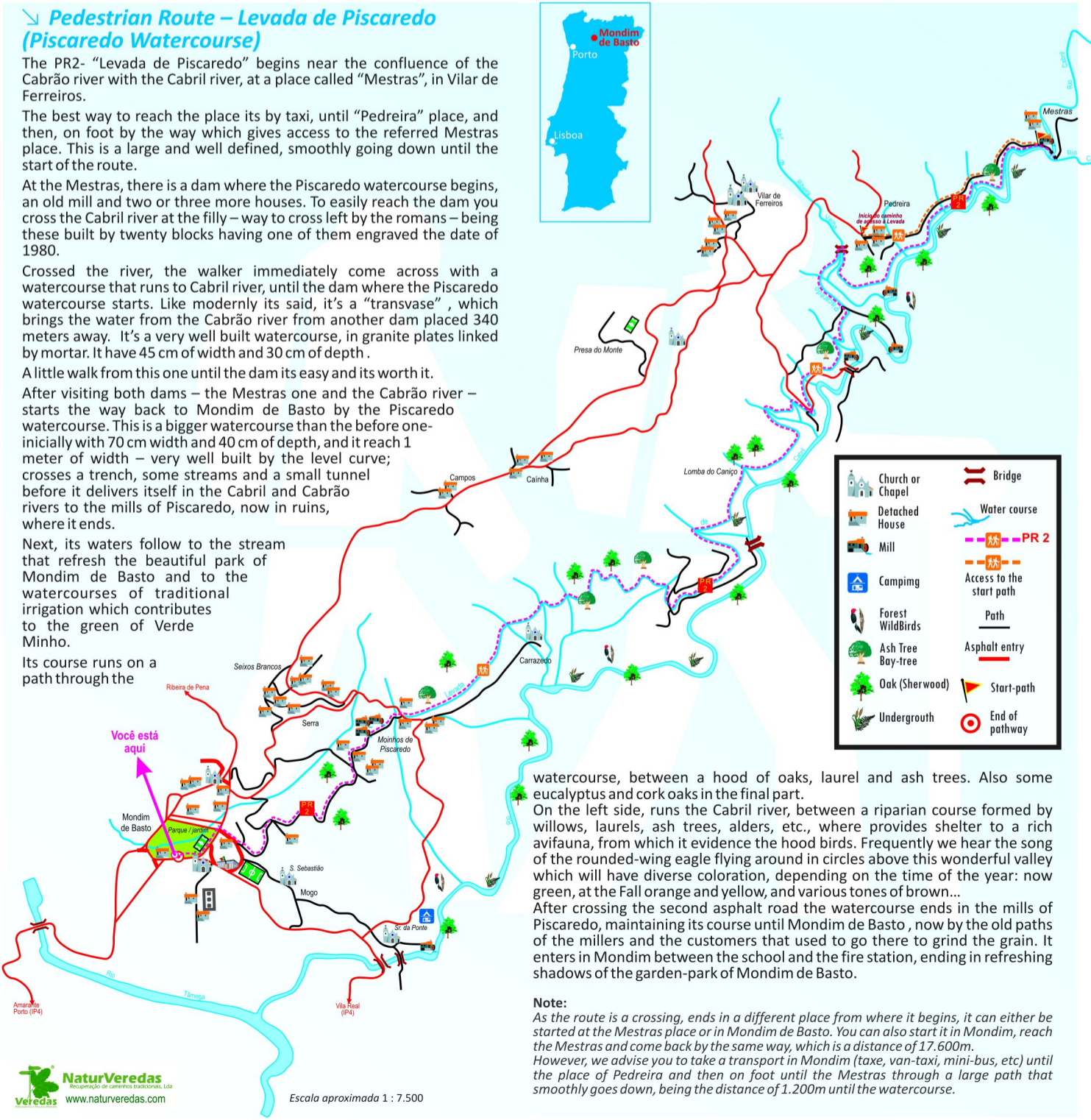
Crossed the river, the walker immediately come across with a watercourse that runs to Cabril river, until the dam where the Piscaredo watercourse starts. Like modernly its said, it's a “transvase”, which brings the water from the Cabrão river from another dam placed 340 meters away. It's a very well built watercourse, in granite plates linked by mortar. It have 45 cm of width and 30 cm of depth.

A little walk from this one until the dam its easy and its worth it.

After visiting both dams – the Mestras one and the Cabrão river – starts the way back to Mondim de Basto by the Piscaredo watercourse. This is a bigger watercourse than the before one- initially with 70 cm width and 40 cm of depth, and it reach 1 meter of width – very well built by the level curve; crosses a trench, some streams and a small tunnel before it delivers itself in the Cabril and Cabrão rivers to the mills of Piscaredo, now in ruins, where it ends.

Next, its waters follow to the stream that refresh the beautiful park of Mondim de Basto and to the watercourses of traditional irrigation which contributes to the green of Verde Minho.

Its course runs on a path through the




watercourse, between a hood of oaks, laurel and ash trees. Also some eucalyptus and cork oaks in the final part.

On the left side, runs the Cabril river, between a riparian course formed by willows, laurels, ash trees, alders, etc., where provides shelter to a rich avifauna, from which it evidence the hood birds. Frequently we hear the song of the rounded-wing eagle flying around in circles above this wonderful valley which will have diverse coloration, depending on the time of the year: now green, at the Fall orange and yellow, and various tones of brown...

After crossing the second asphalt road the watercourse ends in the mills of Piscaredo, maintaining its course until Mondim de Basto, now by the old paths of the millers and the customers that used to go there to grind the grain. It enters in Mondim between the school and the fire station, ending in refreshing shadows of the garden-park of Mondim de Basto.

### Note:

As the route is a crossing, ends in a different place from where it begins, it can either be started at the Mestras place or in Mondim de Basto. You can also start it in Mondim, reach the Mestras and come back by the same way, which is a distance of 17.600m. However, we advise you to take a transport in Mondim (taxe, van-taxi, mini-bus, etc) until the place of Pedreira and then on foot until the Mestras through a large path that smoothly goes down, being the distance of 1.200m until the watercourse.



Escala aproximada 1 : 7.500

## ➤ Technique Board

Start: Mestras Place (Vilar de Ferreiros)

Finish: Mondim de Basto

Field: Environment, landscape, cultural and sport

Type of route: small route, traditional paths through the watercourses

Distance to walk: around 8,8 km

Duration of the walk: 2h and 30m

Difficulty Level: low

Unevenness: not significative

Time Advised: Entire year

Accumulated Unevenness: 110m

Distance between the most significant places:

Mestras → Stream of the Ribeira Velha - 1.740m

Stream of the Ribeira Velha → Piscaredo - 5.580 m

Piscaredo → Mondim de Basto - 1.500 m

Altitude:

- Mestras - 300 m

- Piscaredo Mills - 250 m

- Garden-Park of Mondim - 190 m

The PR2 “Levada de Piscaredo” is a pedestrian path of small route marked on both ways, according with the regulation of Portuguese Federation of Camping and Mountaineering. The marks with yellow and red ink are the following:



## ➤ Special Care and Code of Conduct-Follow only signed paths

- Avoid noises and attitudes that disturb the local tranquility
- Watch the fauna at distance with binoculars if possible
- Do not damage the flora
- Do not abandon garbage, take it to a place where it have gathering service
- Respect private property
- Don't make fire
- Don't collect samples of plants or rocks
- Be nice to local people, telling that you are doing the PR.

THROUGH THE WATERCOURSE THERE ARE SMALL CLIFFS SO BE CAREFUL.

